

# DARK ROOM R4.00

GROW TENT BUILT FOR MEDIUM GROWING SPACE

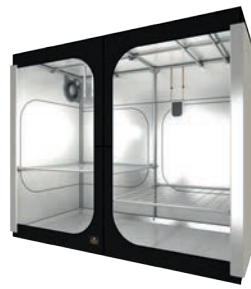
DR150

DR240


DR300

DR240W

DR300W



The Dark Room grow tent is designed for plants measuring 50 to 150cm (20 to 60in) tall, with grow spaces of 2.25 to 9.00m<sup>2</sup> (24 to 97ft<sup>2</sup>). It features DUCTING FLANGES (DF25) for managing intake/exhaust and comes with everything you need to install the complete system. The grow tent comes in a sturdy bag with a shoulder strap. The configuration advice provided in terms of ventilation, lighting and extraction is specific to intensive Level III growing, for sun-loving plants. Divide these figures by 2 or by 4 for Level II and Level I growing.

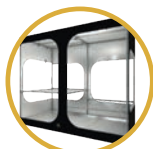
REFERENCE	DESIGNATION METRIC	DESIGNATION IMPERIAL	VIDEO
DR150	Dark Room 150x150x217 cm	Dark Room 5' x 5' x 85"	
DR240	Dark Room 237x237x200 cm	Dark Room 8' x 8' x 79"	
DR300	Dark Room 237x237x200 cm	Dark Room 10' x 10' x 85"	
DR240W	Dark Room 237x100x200 cm	Dark Room 8' x 4' x 79"	
DR300W	Dark Room 297x150x217 cm	Dark Room 10' x 5' x 85"	

## GENERAL DETAILS

	METRIC	IMPERIAL
Canvas	M400D Mylar	M400D Mylar
Poles	Ø25 mm #201 Stainless Steel	Ø1.00" #201 Stainless Steel
Corners	7.0 mm PolyPropylene	0.30" PolyPropylene
Water Tray	Removable Fibered Liner 380 gr/m <sup>2</sup>	Removable Fibered Liner 1.25 oz/ft <sup>2</sup>
Bottom & Bag	PE600D	PE600D



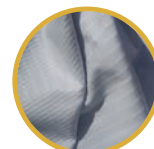
**#201 Stainless Steel**  
Ø25mm | Ø1.00in



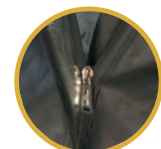
**Accessibility 360°**  
Front Rear & Side



**Fully Pre-equipped**  
Adapt to your needs



**Fibered Liner**  
Strong & Removable



**100% Lightproof**  
Double-flap zip

**SPECIFICATION & ADVISED : METRIC**

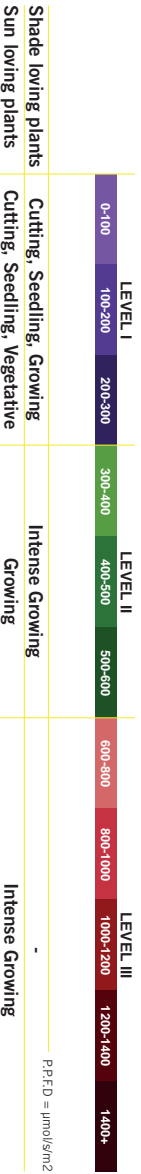
DARK ROOM		WGT	ASSEMBLED			POLES	WEB PLANT	WATER	DUCTING FLANGES INCLUDED			CABLE	HANDLING		ACCESSORIES			
REF	DESIGNATION	Net kg	W cm	D cm	H cm	Ø mm	SUPPORT Included	TRAY Included	Support Flange Ø150	Connector Ø200	Battle #	Flange CF7 #	# cm	L Weight Per Pole	Weight Per Tent	StrapT CableT #	Grid6040 #	
DR150	Dark Room 150 x 150 x 217 cm	26,8	150	150	217	25	1 WEBIT150	1 WTL150	2 DF25	-	2	2	3	150	25 Kg	75 kg	1	20
DR240	Dark Room 237 x 237 x 200 cm	46,2	237	237	200	25	2 WEBIT240W	2 WTL240W	2 DF25	-	2	4	9	120	25 kg	225 kg	1	40
DR300	Dark Room 297 x 297 x 217 cm	66,6	297	297	217	25	2 WEBIT300W	2 WTL300W	4 DF25	-	4	4	10	150	25 kg	250 kg	2	40
DR240W	Dark Room 237 x 120 x 200 cm	31,7	237	120	200	25	2 WEBIT120	1 WTL240W	2 DF25	-	2	3	5	120	25 kg	125 kg	1	40
DR300W	Dark Room 297 x 150 x 217 cm	42,9	297	150	217	25	2 WEBIT150	1 WTL300W	2 DF25	-	2	3	5	150	25 kg	125 kg	1	40

**SPECIFICATION & ADVISED : IMPERIAL**

DARK ROOM		WGT	ASSEMBLED			POLES	WEB PLANT	WATER	DUCTING FLANGES INCLUDED			CABLE	HANDLING		ACCESSORIES			
REF	DESIGNATION	Net kg	W cm	D cm	H cm	Ø mm	SUPPORT Included	TRAY Included	Support Flange Ø150	Connector Ø200	Battle #	Flange CF7 #	# cm	L Weight Per Pole	Weight Per Tent	StrapT CableT #	Grid6040 #	
DR150	Dark Room 5' x 5' x 85"	59	59	59	85	1,00	1 WEBIT150	1 WTL150	2 DF25	-	2	2	3	59	50 lb	150 lb	1	20
DR240	Dark Room 8' x 8' x 79"	102	93	93	79	1,00	2 WEBIT240W	2 WTL240W	2 DF25	-	2	4	9	47	50 lb	450 lb	1	40
DR300	Dark Room 10' x 10' x 85"	147	117	117	85	1,00	2 WEBIT300W	2 WTL300W	4 DF25	-	4	10	59	59	50 lb	500 lb	2	40
DR240W	Dark Room 8' x 4' x 79"	70	93	47	79	1,00	2 WEBIT120	1 WTL240W	2 DF25	-	2	3	5	47	50 lb	250 lb	1	40
DR300W	Dark Room 10' x 5' x 85"	95	117	59	85	1,00	2 WEBIT150	1 WTL300W	2 DF25	-	2	3	5	59	50 lb	250 lb	1	40

DARK ROOM		LIGHTING ADVISED		VOL	EXTRACTOR ADVISED WHEN FILTER ON (*)	
REF	FAN ADVISED	Level III LED PE2.7	Level II LED PE2.7	cf	1 min cycle	2 min cycle
DR150	1 MF30	600 W	400 W	177	400 cfm	210 cfm
DR240	2 MF30	1600 W	800 W	440	550 cfm	400 cfm
DR300	2 MF30	2400 W	1600 W	697	700 cfm	550 cfm
DR240W	1 MF30	800 W	400 W	223	400 cfm	210 cfm
DR300W	2 MF30	1200 W	800 W	352	550 cfm	400 cfm

**LIGHT LEVEL VS GROW STAGE**



secretjardin.com



Secret Jardin



Secret Jardin Official



Secretjardin\_



info@secretjardin.com



secretjardin