

secret JARDIN

For Twenty **100**



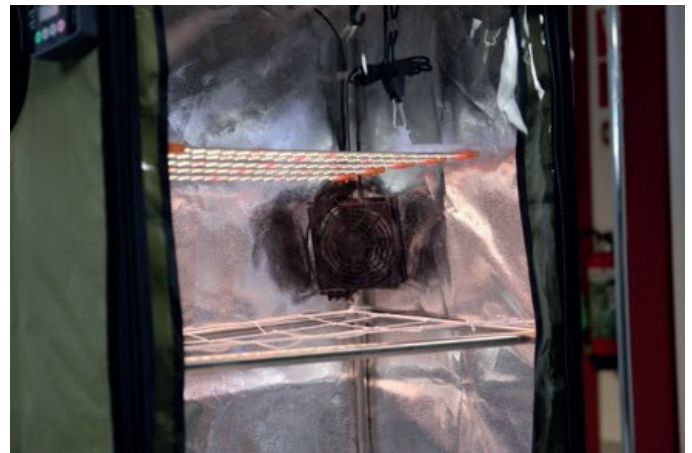
**BRING NATURE HOME WITH SECRET JARDIN**

**For Twenty 100** is an elegantly designed grow kits that empower you to grow your own vegetables, fruits, herbs, and flowers in the comfort of your home. This user-friendly kit, operating quietly at 24 volts, features the latest technologies for successful home cultivation, combined with lowest consumption.



## GARDEN IN YOUR APARTMENT:

Its intensive *full-spectrum lighting* – a combination of powerful summer-like with some spring-like lighting – makes the **For Twenty 100** perfect for growing tall plants, from cutting & seedling up to the harvest of fruits & flowers.



## EXAMPLES OF PLANTATIONS:

Potential harvest in kg per year in parentheses:

- Tomatoes (30)
- Pepper (15)
- Bell pepper (18)
- Cucumber (30)
- Eggplant (20)
- Zucchini (32)
- Hemp (1)...

# For Twenty **100**

60x40x116cm – 100W LED



FS100



## **ALL IN ONE**

This kit includes all hardware needed to start growing: tent, lighting system, ventilation system, circulation fan, and much more.



## **INTENSIVE GROWING**

Secret Jardin Cosmorrow use PPE2.85  $\mu\text{mol/s/m}^2$  professional LEDs. Their spectrum is optimized to stimulate growth of your plants. Combined with the highest reflective mylar (90%), it offers unbeatable light performances.



## **NO ODOR, NO LIGHT, NO NOISE**

With the 100% lightproof envelope, low noise EC engines, and high efficiency carbon filter (sold in option), this grow kit will become your most discreet companion.



## **EASY ASSEMBLY & SAFE**

All components are easy to assemble by clip system. The electrical components operate on 24 Volts and are splash-proof: no longer be afraid of throwing a bucket of water on your plants!



## **LOW CONSUMPTION & DURABLE**

The materials used combined with high-end components make it possible to combine lowest consumption on the market (45 kWh/month) and exceptional lifespan (50,000 hours).

◆◆◆ **BRING NATURE HOME WITH SECRET JARDIN** ◆◆◆

TECHNICAL SPECIFICATIONS

<b>FOR TWENTY 100</b>																									
Reference	FS100																								
Designation	For Twenty 100																								
Weight (Net)	8.5 kg																								
Dimensions Assembled (W x D x H)	60 x 40 x 116 cm																								
<b>CONSUMPTION</b>																									
Max	140 W																								
Monthly																									
Light	12 h/d																								
kWh	45 kWh																								
<b>POWER &amp; PLUGS</b>																									
Voltage	200-240 V																								
Frequency	50/60 Hz																								
Plug Type, Country	C/G Type, UE/UK																								
<b>LIGHTING</b>																									
LED Bulbs	5x COP20FS																								
Power	100 W																								
PPE (Bulb)	2.85 µmol/s/W																								
PPE	2.70 µmol/s/W																								
<b>PPFD</b>																									
Grow Area	60x40 cm																								
Lighting Distance	15 cm																								
5x COP20FS	<table border="1"> <tr><td>945</td><td>1180</td><td>1350</td><td>1350</td><td>1180</td><td>945</td></tr> <tr><td>1180</td><td>1755</td><td>2045</td><td>2045</td><td>1755</td><td>1180</td></tr> <tr><td>1180</td><td>1755</td><td>2045</td><td>2045</td><td>1755</td><td>1180</td></tr> <tr><td>945</td><td>1180</td><td>1350</td><td>1350</td><td>1180</td><td>945</td></tr> </table>	945	1180	1350	1350	1180	945	1180	1755	2045	2045	1755	1180	1180	1755	2045	2045	1755	1180	945	1180	1350	1350	1180	945
945	1180	1350	1350	1180	945																				
1180	1755	2045	2045	1755	1180																				
1180	1755	2045	2045	1755	1180																				
945	1180	1350	1350	1180	945																				
PPF: 270 µmol/s – Average PPFD: 1000 µmol/s/m²																									
Spectrum	<p>Summer: Full Spectrum</p>																								
<b>VENTILATION</b>																									
2 min cycle (filter on)																									
Extractor (included)	150 m³/h																								
Filter (option)	100 m³/h																								
Fan (included)	2x MF120																								
<b>HEAT MAT</b>																									
Included	–																								
Option	1x 20 W																								
<b>OTHER</b>																									
Life Time	50 000 h																								

COMPLETE KIT



TEMPERATURE CONTROL VS AMBIANT T°

Depending on the ambient temperature:  
**15 to 25°C:** The kit regulates temperature according to target.  
**Below 15°:** Heat up incoming air, except for winter plants.  
**Over 25°C:** Cool down incoming air, except for tropical plants.

To **boost** your plants, the **Heat Mat** is recommended for:

- 15 to 20°C for all plants
- 15 to 25°C for clones and seeds.

It will heat up the soil by 3°C and will automatically turn off at 24°C.



HUMIDITY CONTROL

The “**EXT MIN**” (minimum extraction) function of the extractor will ensure that relative humidity does not exceed a given level:

- ~10%: increase humidity  
*Clones, seeds, tropical plants*
- ~25%: moderate effect on humidity  
*Springtime plants (growing)*
- ~50%: decrease humidity  
*Summertime plants (flowering)*

REFERENCE, CONSUMABLES & OPTIONS

	REFERENCE	DESIGNATION	EAN CODE
	<b>FS100</b>	Summer Kit 60x40x116cm 100 W	5 425030 267943
OPTION	<b>HM20</b>	Heating Mat 55x35cm 20 W	5 425030 267981
OPTION	<b>DF16F100</b>	DF16 Carbon Filter CTC80 0.4 kg 100m³/h	5 425030 268070



info@secretjardin.com



Secretjardin\_



Secret Jardin Official



Secret Jardin



secretjardin.com